

Serie HIPRESS



PN 210

TECHNICAL FEATURES:

Temperature limits: for fluids from -10°C to $+80^{\circ}\text{C}$

Pressure limits: for fluids from 210 bar

SPECIFIC FEATURES:

- The HIPRESS valve, with reduced bore, has been designed for high pressures.

Bore: reduced.

Stem: anti blow out.

Seats: high resistance virgin PTFE .

Upper seal: 3 seals

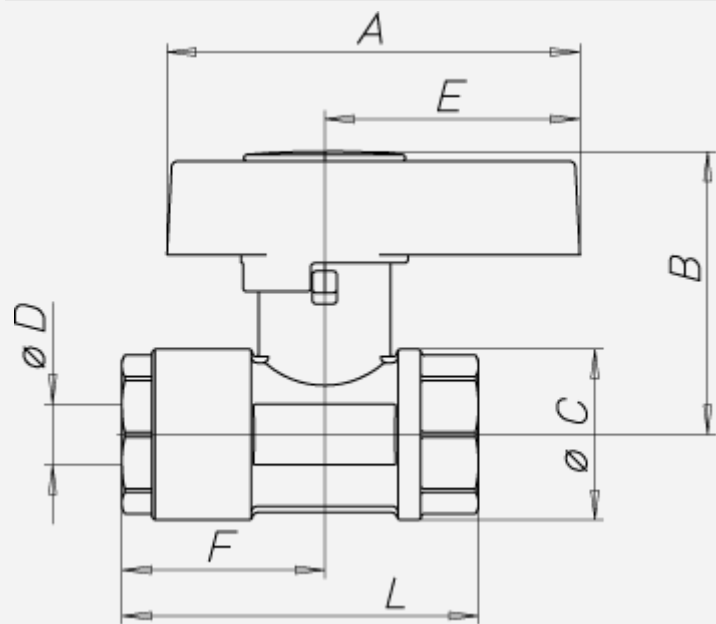
2 anti-friction self-adjusting cone shaped seals, in PTFE - high and medium pressure.

1 O-Ring - low and medium pressure.

Application fields:

The HIPRESS series is recommended for hydraulic installations, pneumatics and industrial plants in general, high pressure.

DIMENSIONS



VALVE DIMENSIONS PER TYPE AND SIZE

Threaded end connections:

- Standard female according to UNI ISO 7/1 (UNI EN 10226).

Operation devices:

Aluminium T-handle.

Available colours: black.

All the valves comply with the regulation 97/23/CE and are tested 100% on pneumatic seal with electronic control.

nominal diameter mm Nenndurchmesser mm	10	15	20	25																
size in inches Zoll Abmessung	3/8"	1/2"	3/4"	1"																
Ø D bore mm Ø D durchgang mm	8	12	16	20																
A mm	73	73	110	110																
B mm	54	56	75	77																
Ø C mm	30	36	45	53																
E mm	43	43	68	68																
F mm	44	47	54	56																
L mm	75	85	95	105																
Kv	4,15	9,35	16,20	27,70																

PRESSURE/TEMPERATURE DIAGRAM

